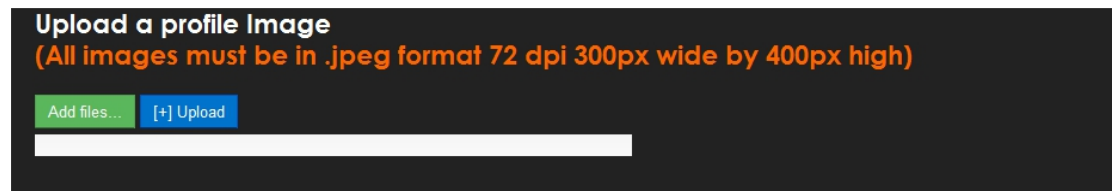
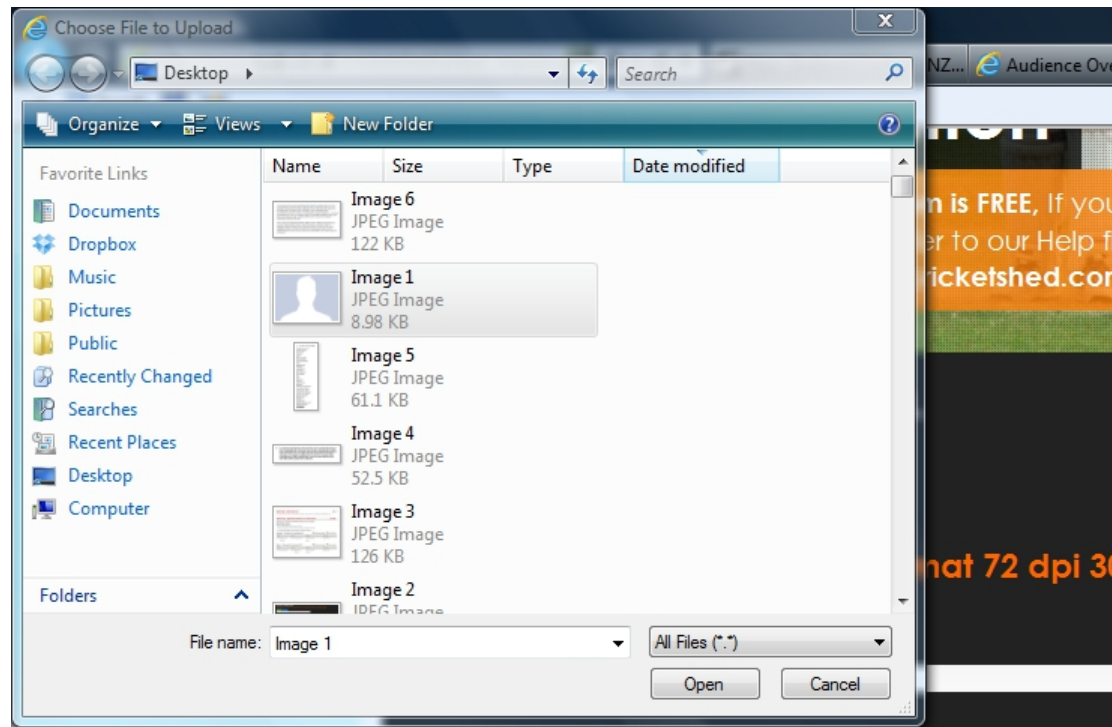


Uploading an Image/Photo



Click “Add files...” button



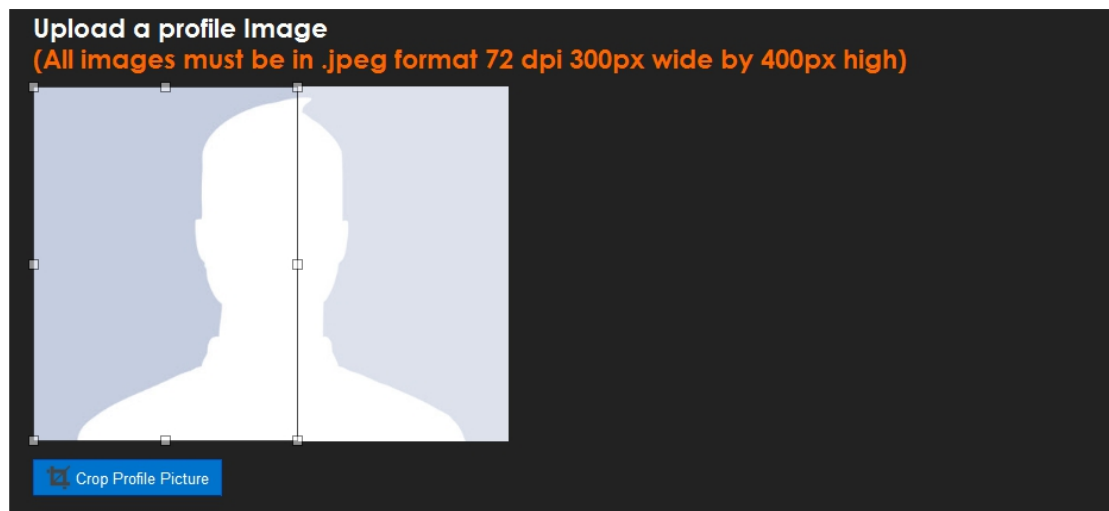
Navigate your way to the image you want to upload, in the screenshot above the image required is on the Desktop.

Highlight the image required and select “Open”



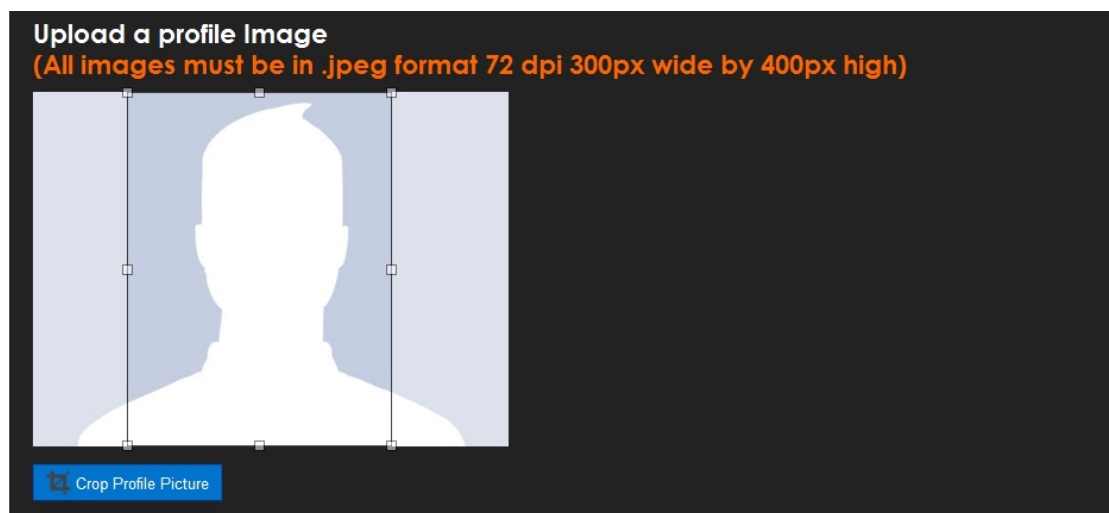
The file to be uploaded is now displayed “image 1.jpg”

Press the “Upload” button

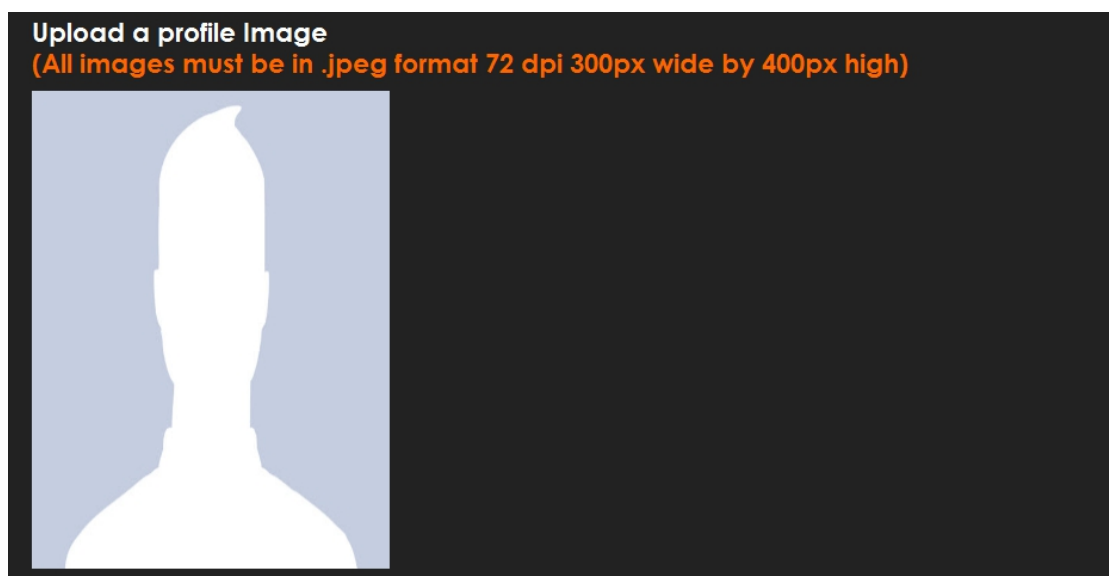


Your image is now uploaded

Place your cursor over the selected area and you can move and select the most appropriate area of the image that is best.



When you're happy with the selected area to be uploaded –
Click "Crop Profile Picture" button



Your image is now uploaded into your profile.

Note:- The image may look a bit stretched and elongated but will be displayed correctly on your profile page